

New hassle-free smart control panel for your home

The akubela HyPanel KeyPlus, a smart control panel with an Android 13 operating system. The ALL IN ONE design integrates smart intercom, ZigBee gateway and home automation, and is compatible with plentiful ecosystem. Multi-modal interaction can be easily used by the whole family, offering the excellent smart home experience.

At a Glance

- Excellent performance with Android 13 system
- 4" multi-touch screen with energy saving mode
- 6 touch buttons, suitable for the whole family
- 2-gang relay, can connected to lights directly
- Smart intercom, ZigBee gateway, home automation ALL IN ONE
- US standard flush mounted box



Basic Information

- Model Number: KS53-R2-US
- Power Supply: 100 ~ 250VAC, 50/60Hz
- Built-in Relay Capacity: 16A
- Output: 2 gang, 400W total;
200W/gang for resistive;
200W/gang for LED/CFL;
Wire Range: 1.5 ~ 4.0mm² (16 ~ 10AWG)
- Power Meter: Supported
- Operation System: Android 13
- RAM/ROM: 2GB/8GB
- Wi-Fi: WiFi6, IEEE 802.11a/b/g/n/ac/ax
- Bluetooth: Bluetooth 5.3

- ZigBee: ZigBee 3.0
- ZigBee Sub-Device Limit: 128
- Microphone: Dual microphones, -26dBFS
- Speaker: Single speaker, 8Ω/1.5W

Appearance

- Material: V0 fireproof PC
- Button: 6 touch button
- Screen: 4" multi-touch screen
- Screen Resolution: 480×480 pixels
- Screen Brightness: 210 cd/m²

Sensors Built In

- Proximity Sensor: 30 ~ 60cm
- Light Sensor: Low-level lux detection



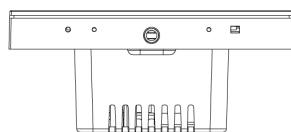
Working Environment

- Environment: For indoor use only
- Working Humidity: 10% ~ 90%RH, without condensation
- Working Temperature: -10°C ~ 55°C
- Storage Temperature: -30°C ~ 70°C
- IP Rating: IP20

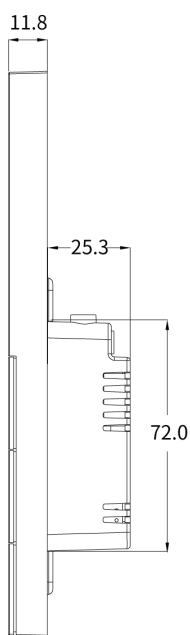
Installation

- Installation: Wall flush mounting
- Flush Mounted Module: TH/US standard
- Wiring Way: L- + N- + Ground wire required

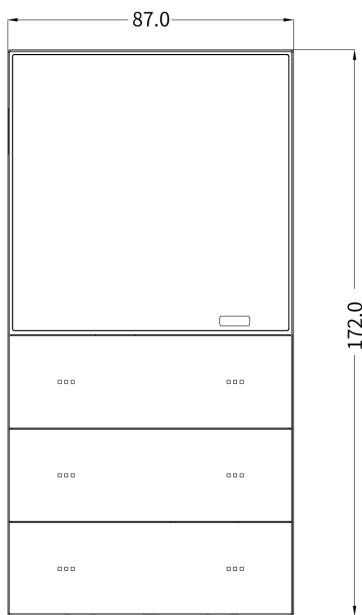
Product Dimension Diagram (mm)



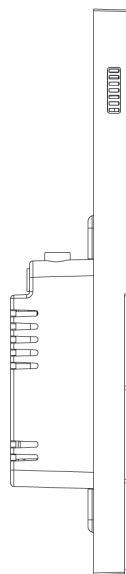
⑤ BOTTOM VIEW



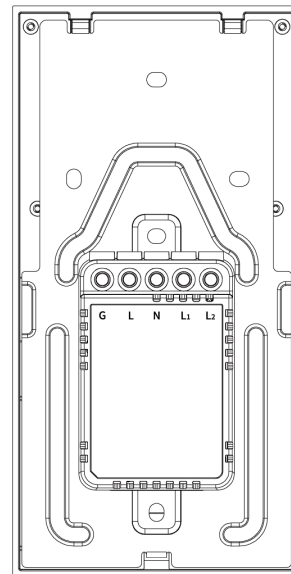
② RIGHT VIEW



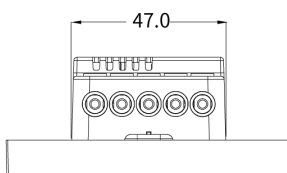
① FRONT VIEW



③ LEFT VIEW



④ BACK VIEW



⑥ TOP VIEW